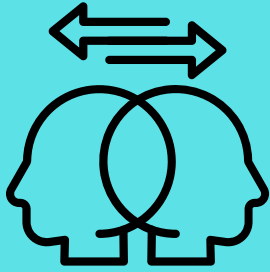


CC BY-NC-SA 4.0

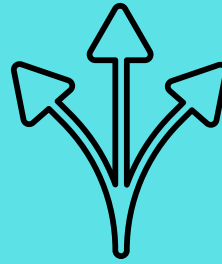
realizingsocialstudies.com



**CONFLICT** is a struggle between opposing people, groups, or ideas

CC BY-NC-SA 4.0

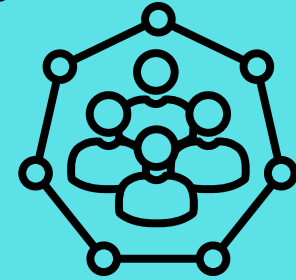
realizingsocialstudies.com



**CHOICE** is the act of deciding between two or more possibilities

CC BY-NC-SA 4.0

realizingsocialstudies.com



**CULTURE** is the shared beliefs, values, and customs of a group of people

CC BY-NC-SA 4.0

realizingsocialstudies.com



**INTERDEPENDENCE** is the mutual reliance among people or things in a system

CC BY-NC-SA 4.0

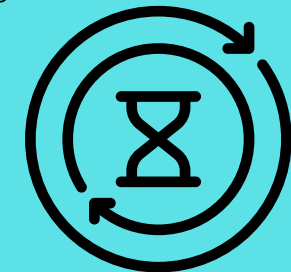
realizingsocialstudies.com



**JUSTICE** is a principle of fairness and equitable treatment

CC BY-NC-SA 4.0

realizingsocialstudies.com



**CHANGE** is the process through which ideas, societies, and the world evolve over time

CC BY-NC-SA 4.0

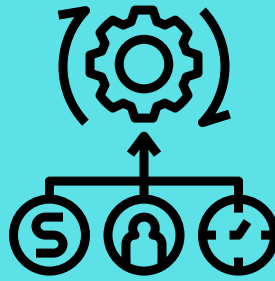
realizingsocialstudies.com



**POWER** is the ability to influence or control the behavior of others

CC BY-NC-SA 4.0

realizingsocialstudies.com



A **RESOURCE** is an asset that people use for development, survival, or wealth

CC BY-NC-SA 4.0

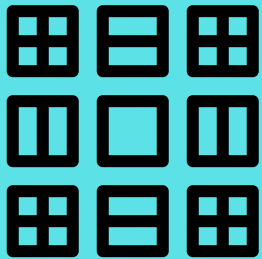
realizingsocialstudies.com



**PLACE** is the geographical context that shapes cultural and historical significance

CC BY-NC-SA 4.0

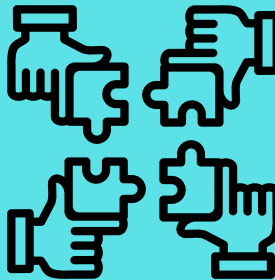
realizingsocialstudies.com



A **PATTERN** is a recurring theme or trend

CC BY-NC-SA 4.0

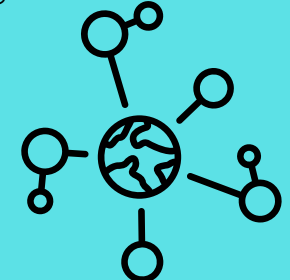
realizingsocialstudies.com



**COOPERATION** is a way of working together for a common purpose

CC BY-NC-SA 4.0

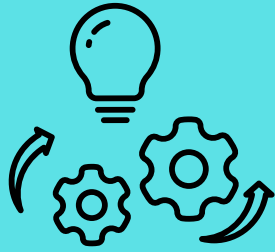
realizingsocialstudies.com



**INTERCONNECTION** is having relationships with other people, places, or ideas

CC BY-NC-SA 4.0

realizingsocialstudies.com



**INNOVATION** is a change or evolution. Innovations have complex effects

CC BY-NC-SA 4.0

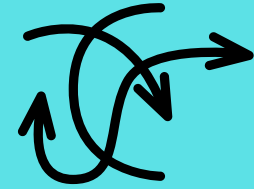
realizingsocialstudies.com



**INNEQUALITY** is when one person or group has more than another

CC BY-NC-SA 4.0

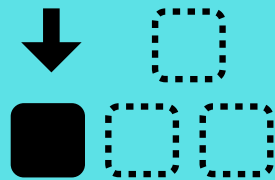
realizingsocialstudies.com



**COMPLEXITY** is a state resulting from non linear, dynamic relationships

CC BY-NC-SA 4.0

realizingsocialstudies.com



**SCARCITY** is not having enough of something to go around

CC BY-NC-SA 4.0

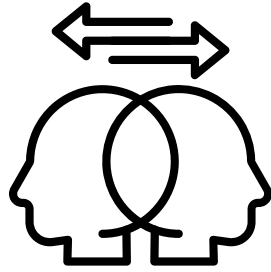
realizingsocialstudies.com



**IDEAS** and **BELIEFS** shape how we understand ourselves, others, and the world

CC BY-NC-SA 4.0

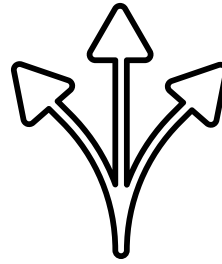
realizingsocialstudies.com



**CONFLICT** is a struggle between opposing people, groups, or ideas

CC BY-NC-SA 4.0

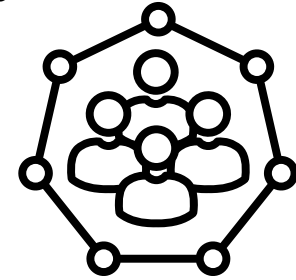
realizingsocialstudies.com



**CHOICE** is the act of deciding between two or more possibilities

CC BY-NC-SA 4.0

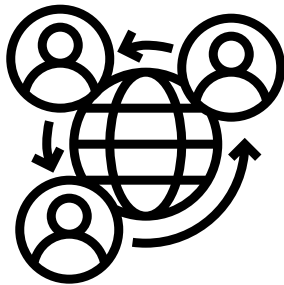
realizingsocialstudies.com



**CULTURE** is the shared beliefs, values, and customs of a group of people

CC BY-NC-SA 4.0

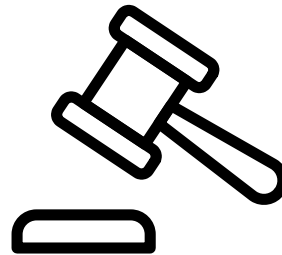
realizingsocialstudies.com



**INTERDEPENDENCE** is the mutual reliance among people or things in a system

CC BY-NC-SA 4.0

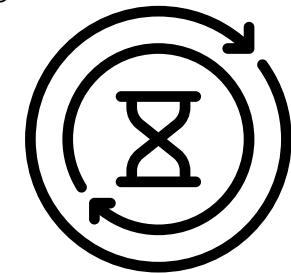
realizingsocialstudies.com



**JUSTICE** is a principle of fairness and equitable treatment

CC BY-NC-SA 4.0

realizingsocialstudies.com



**CHANGE** is the process through which ideas, societies, and the world evolve over time

CC BY-NC-SA 4.0

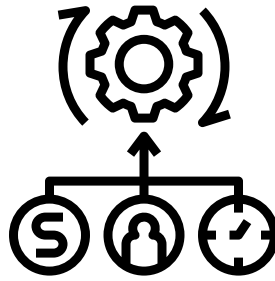
realizingsocialstudies.com



**POWER** is the ability to influence or control the behavior of others

CC BY-NC-SA 4.0

realizingsocialstudies.com



A **RESOURCE** is an asset that people use for development, survival, or wealth

CC BY-NC-SA 4.0

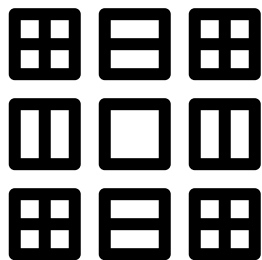
realizingsocialstudies.com



**PLACE** is the geographical context that shapes cultural and historical significance

CC BY-NC-SA 4.0

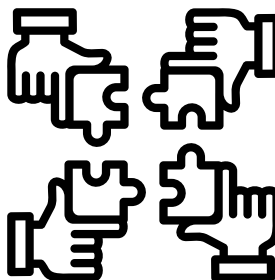
realizingsocialstudies.com



A **PATTERN** is a recurring theme or trend

CC BY-NC-SA 4.0

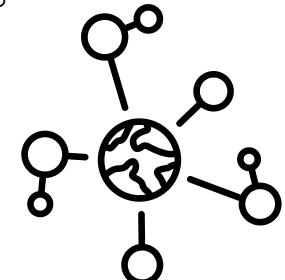
realizingsocialstudies.com



**COOPERATION** is a way of working together for a common purpose

CC BY-NC-SA 4.0

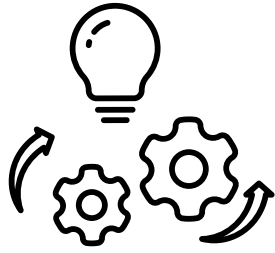
realizingsocialstudies.com



**INTERCONNECTION** is having relationships with other people, places, or ideas

CC BY-NC-SA 4.0

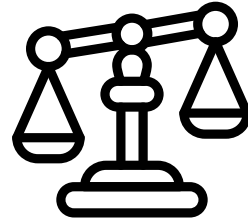
realizingsocialstudies.com



**INNOVATION** is a change or evolution. Innovations have complex effects

CC BY-NC-SA 4.0

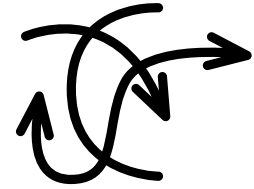
realizingsocialstudies.com



**INNEQUALITY** is when one person or group has more than another

CC BY-NC-SA 4.0

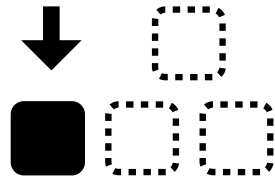
realizingsocialstudies.com



**COMPLEXITY** is a state resulting from non linear, dynamic relationships

CC BY-NC-SA 4.0

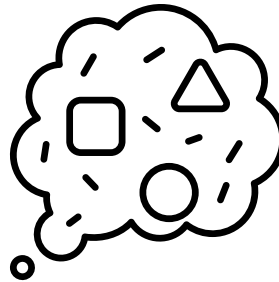
realizingsocialstudies.com



**SCARCITY** is not having enough of something to go around

CC BY-NC-SA 4.0

realizingsocialstudies.com



**IDEAS** and **BELIEFS** shape how we understand ourselves, others, and the world